

OSLO

Optics Software for Layout and Optimization

Installation Guide

Release 2021

Revision 31 March 2021



Lambda Research Corporation
25 Porter Road
Littleton, MA 01460

Tel. 978-486-0766
FAX 978-486-0755
support@lambdare.com

COPYRIGHT AND TRADEMARK ACKNOWLEDGMENTS

COPYRIGHT

The OSLO software and manual are Copyright © 2021 by Lambda Research Corporation. All rights reserved.

This software may only be used by one user per license obtained from Lambda Research Corporation.

The OSLO manual contains proprietary information. This information as well as the rest of the manual may not be copied in whole or in part, or reproduced by any means, or transmitted in any form without the prior written consent of Lambda Research Corporation.

TRADEMARKS

TracePro and OSLO are registered trademarks of Lambda Research Corporation.

TracePro Bridge and RayViz are trademarks of Lambda Research Corporation.

Wibu is a registered trademark of Wibu Systems AG

ACIS is a registered trademark of Spatial Corporation.

SolidWorks is a registered trademark of SolidWorks Corporation.

Adobe and Acrobat are trademarks of Adobe Systems Incorporated.

Windows and Microsoft are either registered trademarks or trademarks of Microsoft Corporation in the United States and/or other countries.

All other names and products are trademarks of their respective owners.

Contents

Installation	1
Impact on Existing Installations of OSLO	1
System Requirements	1
Software Download	2
OSLO Installation	3
Lambda Network License Server Installation	4
Launching OSLO and the License Troubleshooter	5
From a computer with OSLO installed	5
From a Network License Server	5
OSLO Private Directory	6
New Installation (Create Private Directory)	6
Updating a Previous Installation (Merge Private Directory)	6
Licensing	7
License Options	7
Single-computer vs. Network	7
USB License vs. Soft License	7
Multiple Product License vs. Separate License	7
Requesting a New License	8
Activate License	8
Software Updates and Maintenance Tasks	9
About OSLO	9
OSLO License Information	10
Resolve	10
Refresh	10
Upgrade	10
Upgrade License	11
Purchase Upgrade	11
Send Receipt	11
Upgrade Trial	12
Check for Updates	13
Monitoring Network License Usage	14
Transferring OSLO to a New Computer	16
License	16
Private Directory	16
Initialization File	16
Transferring the OSLO Network License to a New License Server	17
Modify, Repair, or Remove the Program	18
Quickstart Guides	19
Quickstart Guide 1 – Single-computer / Soft License	19
Quickstart Guide 2 – Single-computer / USB License	19
Quickstart Guide 3 – Network / Soft License	19

Quickstart Guide 4 – Network / USB License	19
Troubleshooting Guide – Installation and Licensing	20
Installation Troubleshooting	20
License Troubleshooting.....	20
No license is located	20
A license has been located, but fails	21
Possible Causes of License Issues	22
Set Server Name	22
Double-click to Activate license fails	24
 Appendix A – Image of CodeMeter USB Dongle	 25

INSTALLATION

Impact on Existing Installations of OSLO

- OSLO 2021 21.x or later will overwrite any existing installations of OSLO 2020 20.x or earlier.
- OSLO 2021 21.x releases will overwrite previous OSLO 2021 21.x releases.

System Requirements

Operating System	Windows 8 (64-bit) Windows 10 (64-bit)
Minimum RAM	2 GB
Recommended Operating System	Windows 10 64-bit
Disk space required for installation	200 MB

Software Download

OSLO and additional support programs, examples, and documentation are available from the Lambda Research Corporation website.

- Go to <http://lambdaresearch.com/support/oslo-current-release/>



OSLO Current Release

[Support](#) > [OSLO](#) > [OSLO Releases](#) > [OSLO Current Release](#)

OSLO 2021 21.1 Released 10 March 2021

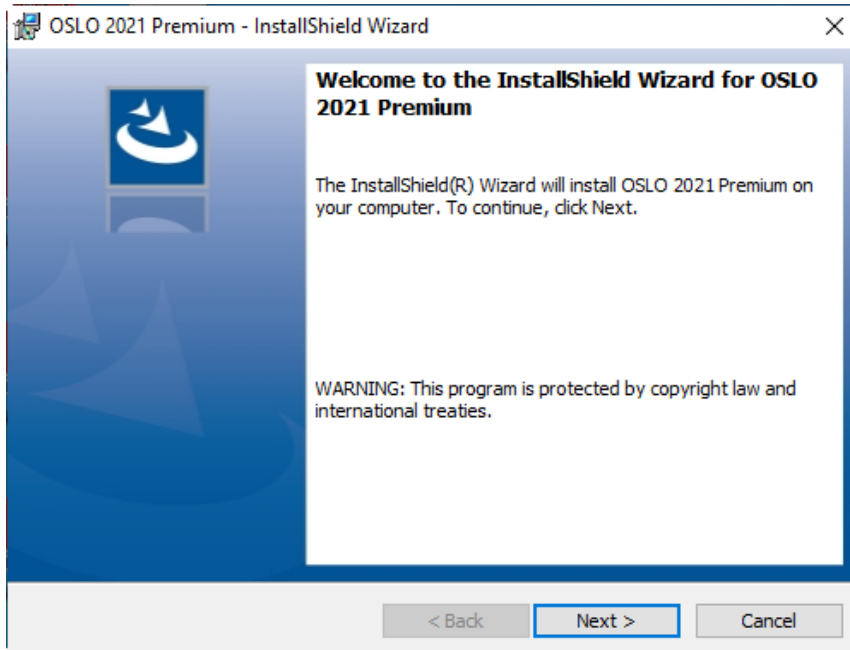
- **STEP 1 - Download and install OSLO**
 - [OSLO Premium Installer](#)
- **STEP 2 - Download and install on Network License Servers**
 - [Lambda Network License Server Installer](#)
- **STEP 3 - Request OSLO License**

- Save the OSLO Installer.exe file to a convenient location on your computer. Double-click on the OSLO Installer.exe file to begin the installation.
- Network Licenses only – download and install LambdaNetworkLicenseServerInstaller on the computer that will be acting as the OSLO License Server.

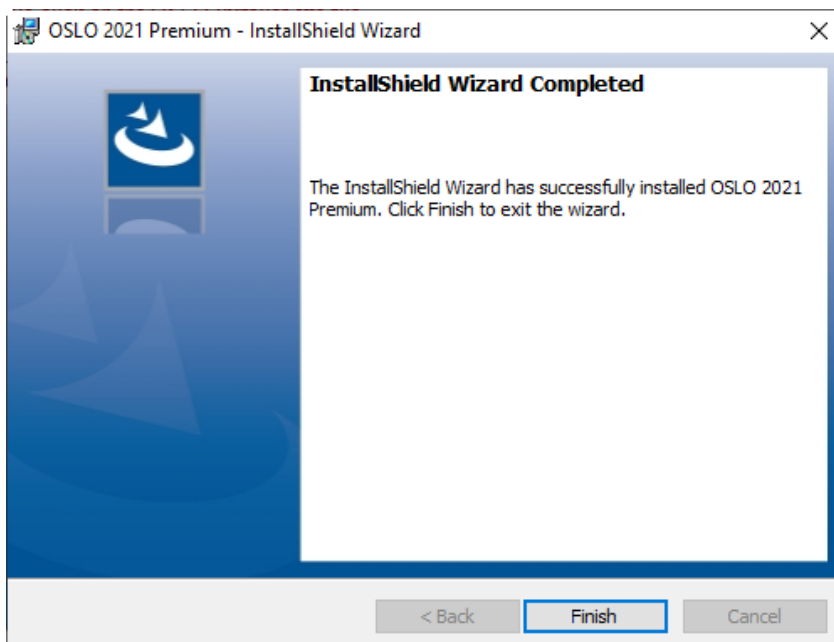
The OSLO software is also available on USB Flash Drive by request.

OSLO Installation

- Double-click on the OSLO Installer.exe file.



- Follow the steps of the OSLO Installation Wizard.

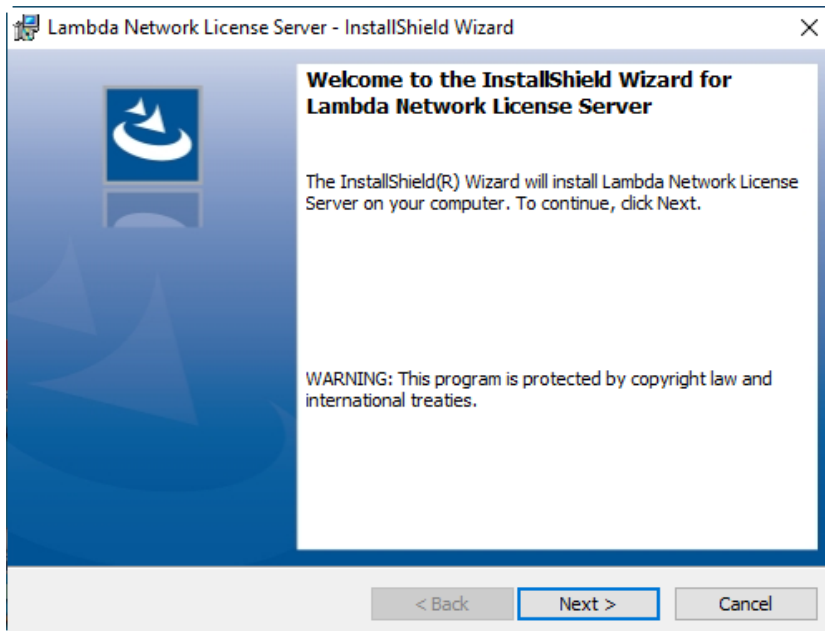


- Click **Finish** to complete the installation.

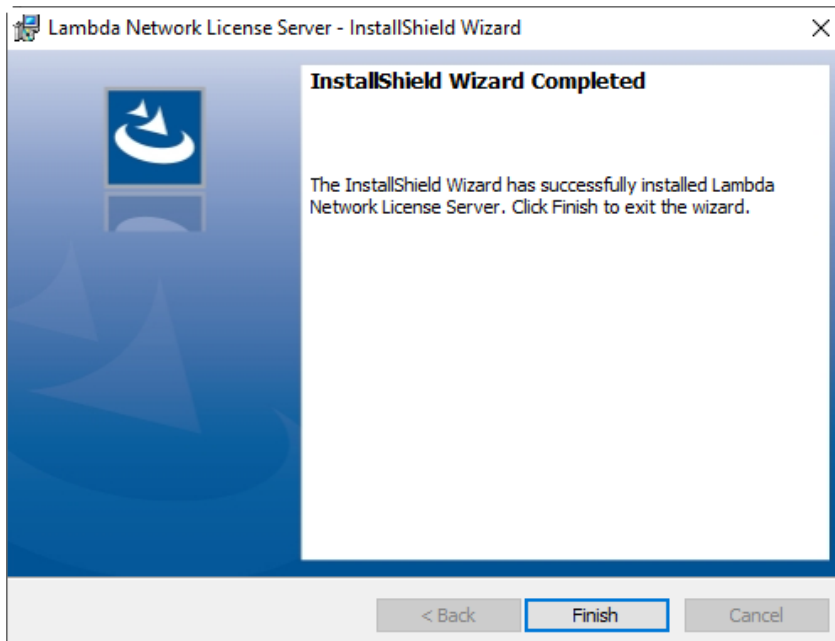
Lambda Network License Server Installation

There are two items of software that need to be installed on the computer that will be acting as the OSLO License Server for a network license, the CodeMeter Control Center and the License Troubleshooter. These two items are packaged into one installer.

- Double-click on the LambdaNetworkLicenseServerInstaller.exe file ...



- Follow the steps of the Lambda Network License Server Installation Wizard.



- Click **Finish** to complete the installation.

LAUNCHING OSLO AND THE LICENSE TROUBLESHOOTER

From a computer with OSLO installed

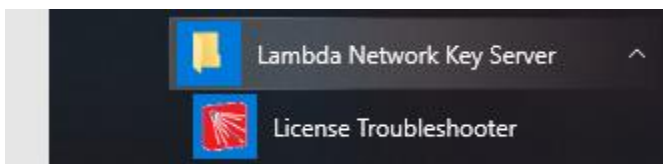
To launch OSLO or the License Troubleshooter, select the icon from the Windows Start→Programs menu.



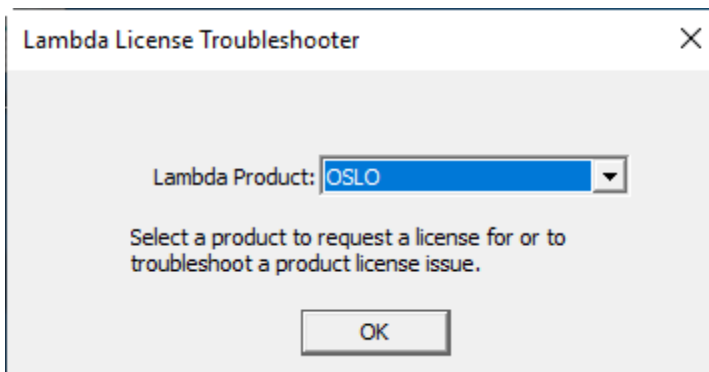
If OSLO finds an available license, the program will launch.

From a Network License Server

To launch the License Troubleshooter, select the icon from the Windows Start→Programs menu.



The Lambda License Troubleshooter dialog will appear.



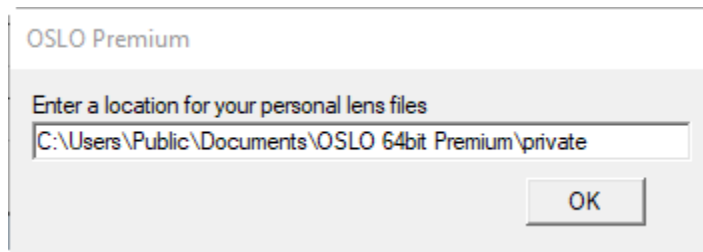
Select OSLO and click OK to launch the OSLO License Troubleshooter.

OSLO Private Directory

OSLO is customizable, and the Private Directory is the location where that customization is maintained.

New Installation (Create Private Directory)

The first time OSLO is installed and launched, a dialog will appear to enter the location of the Private Directory:



Updating a Previous Installation (Merge Private Directory)

If OSLO is installed over any earlier OSLO release, the location previously set for the Private Directory will be maintained, and no files in that Private Directory will be overwritten.

The installation of OSLO creates the directory:

- C:\Program Files\Lambda Research Corporation\OSLO 64bit Premium\PrivateFolderMasterCopy

To run OSLO with the latest changes, files need to be merged from PrivateFolderMasterCopy to the existing Private Directory.

Guidelines for merging the Private Data Files:

- As installed, the OSLO Private Directory contains 11 folders and 39 files.
 - bin - 2 files
 - bin/amo - 4 files
 - bin/glc - 1 file
 - bin/ima - 8 files
 - ccl - 4 files
 - cdb - 8 files
 - cdb/tutorial - 6 files
 - int - 1 file
 - len - (empty)
 - scp - 2 files
 - sources - 1 file
- OSLO users can also modify any Public ccl file and save it to the Private ccl location to supersede the file in Public ccl.
- If any file has been modified by an OSLO user, and also by the OSLO Software Developers, a direct comparison of the content of each file is needed, and a modified file that includes parts of both files may be required.

LICENSING

License Options

There are three decisions to make when purchasing an OSLO license:

- Single-computer vs. Network
- USB License vs. Soft License
- Multiple Product License vs. Separate License

Single-computer vs. Network

Single-computer license

- Allows one user to run multiple instances of OSLO on one computer
- The license services and utilities are included in the installation of OSLO

Network license

- Allows several users on a single Local Area Network (LAN), or with remote access to that network, to share licenses of OSLO
- One computer on the network acts as the OSLO License Server – OSLO can be, but does not need to be, installed in the License Server – the license services and utilities must be installed on the License Server if the application is not installed
- OSLO must be installed on each user's computer

USB License vs. Soft License

USB License

- License information is contained within the USB device
- Physical USB device must be connected to the computer
- Portable - can be transferred to another computer

Soft License

- License is linked to unique hardware and software identifiers of the computer
- No physical USB device to connect
- Not portable - will only work on the specific hardware/software configuration for which it was generated

Special considerations for Soft licenses:

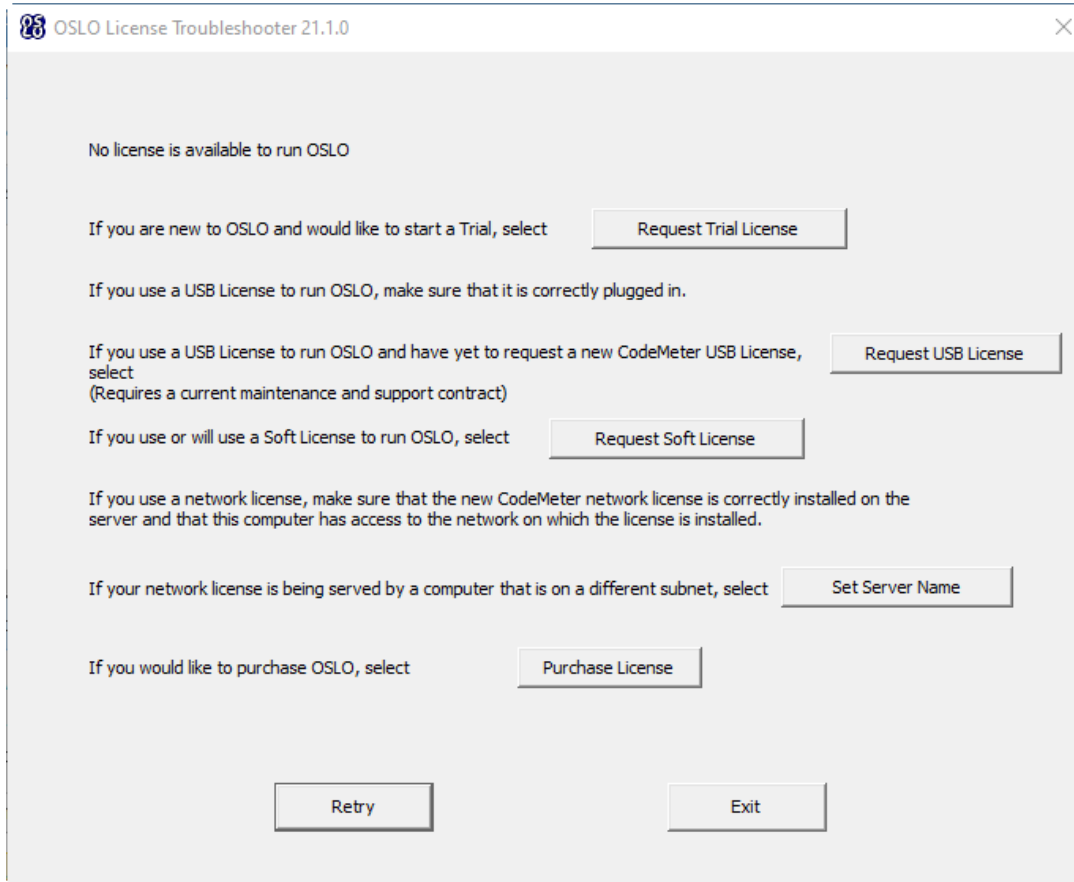
- Moving the License – the process for moving a soft license to a new computer is to first remove the existing license, then to obtain a new license
- System Restore – If a System Restore is performed, this will deactivate the license
- Virtual License Servers – if a virtual license server is moved to a different physical server, this will deactivate the license

Multiple Product License vs. Separate License

- Multiple Product License (TracePro/OSLO/RayViz) - advantage is that there is only one license to maintain
- Separate License – advantage is that single-computer licenses can be run on different computers

Requesting a New License

When OSLO is launched (or when the Lambda License Troubleshooter is launched on a Network License Server) and no valid license is detected, the OSLO License Troubleshooter dialog will open.



- Request Trial License - select this option to send a CodeMeter context file to sales@lambdaires.com
- Request USB key - select this option if you have a current Maintenance and Support subscription for OSLO and would like to receive a CodeMeter USB key to run OSLO 7 and later.
- Request Softkey - select this option to send a CodeMeter context file to license@lambdaires.com
- Set Server Name – select this option to specify a server for a network license (searches entire subnet by default)
- Purchase License - select this option to send an e-mail to sales@lambdaires.com to request information about purchasing a licenses for TracePro

ALL – Please include your name and organization in the e-mail

NOTE – For customers that do not have an e-mail client installed or actively setup, the automatic e-mail and file attachment feature will not succeed. The context file named “OSLO32767-xxxxxxx.WibuCmRaC” is also saved to your Desktop so you can send it to us.

Activate License

Upon receipt of a CodeMeter Update file from license@lambdaires.com, save the file, then double-click on the file to activate the license.

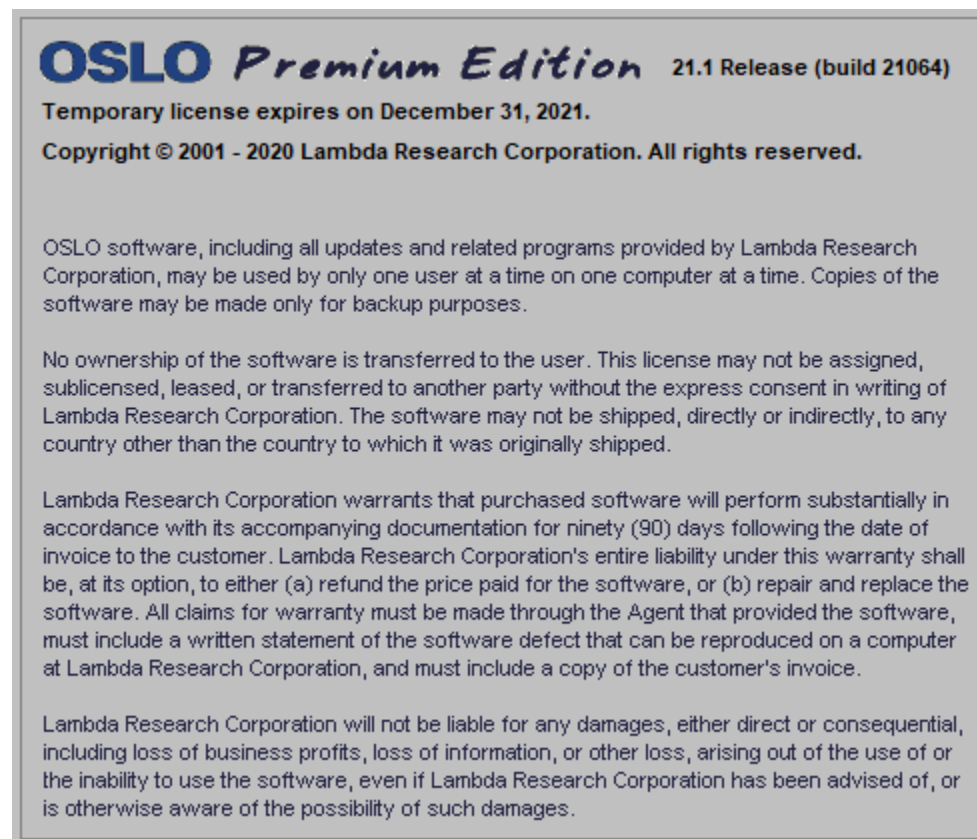
SOFTWARE UPDATES AND MAINTENANCE TASKS

About OSLO

To view the About OSLO window, select Help / About OSLO from the OSLO menu.

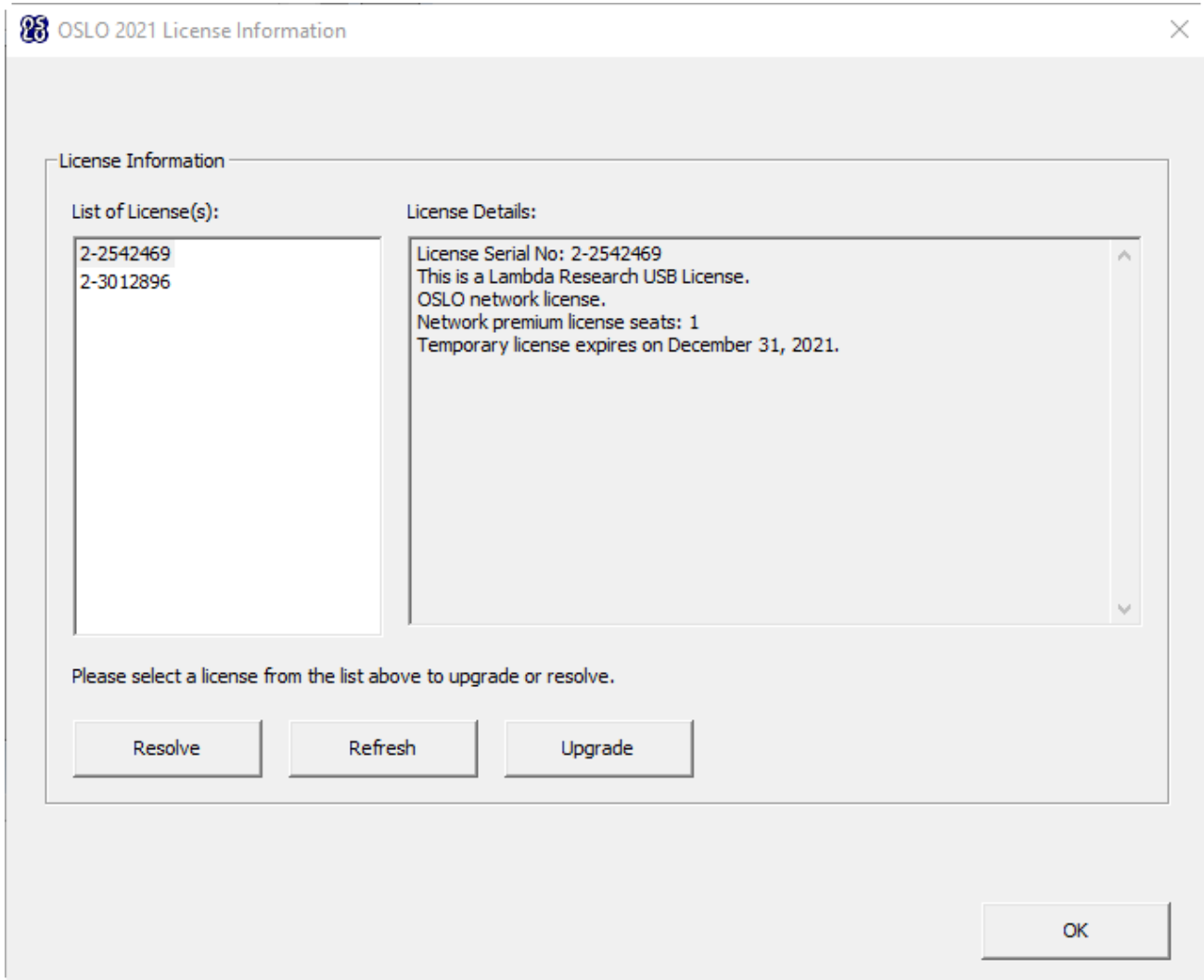
The About OSLO window displays the following information:

- OSLO Release
- Permanent License OR Days Remaining on Temporary License



OSLO License Information

To view the OSLO License Information dialog, select Help / License from the OSLO menu, then select an item in the List of License Key(s).



Resolve

- select this option to troubleshoot a licensing issue

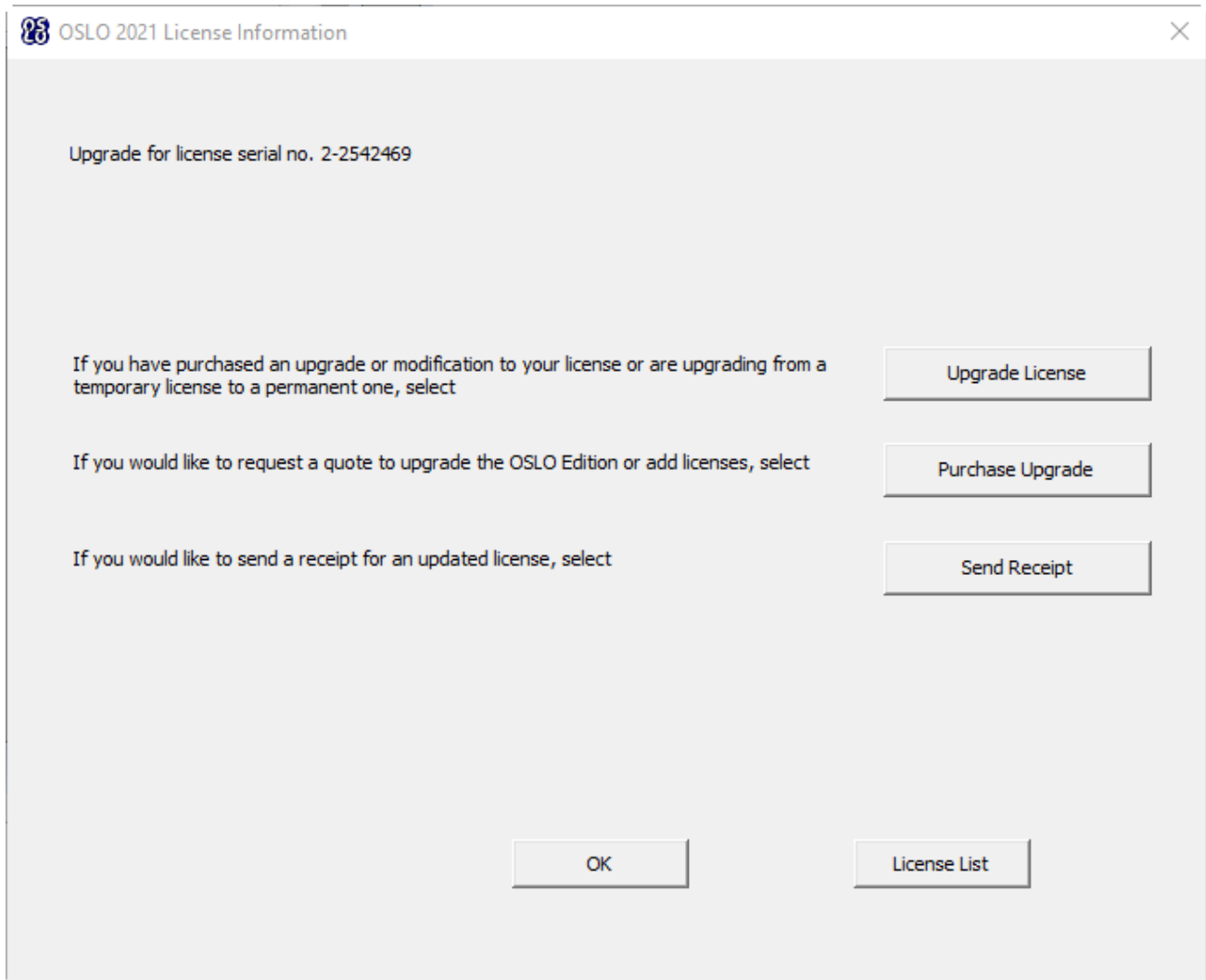
Refresh

- select this option to refresh the license information after connecting/disconnecting USB keys or network connections

Upgrade

- select the license in the List of License Key(s), then select this option to open another page of options related to making changes to the existing license

After selecting Upgrade, three options are available:



Upgrade License

- select this option to upgrade the current OSLO license (change the OSLO Edition, add time to a temporary license, etc) – this option sends an e-mail to license@lambdares.com with a context file taken from an existing license

Purchase Upgrade

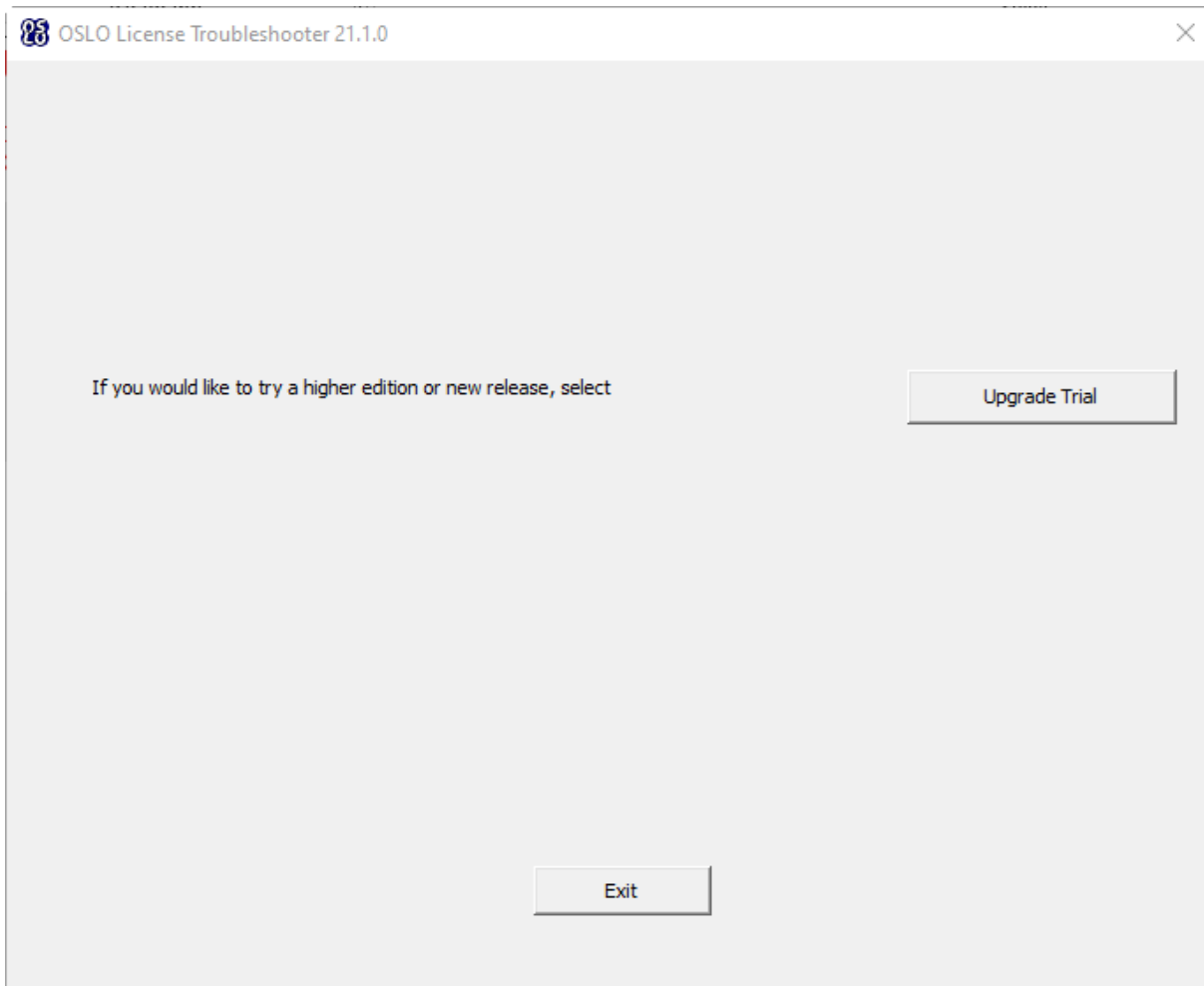
- select this option to upgrade the current OSLO license (change the OSLO Edition, add time to a temporary license, etc) – this option sends an e-mail to sales@lambdares.com with a context file taken from an existing license

Send Receipt

- select this option to send verification that a license update has been activated (most commonly used for a soft license replacement) – this option sends an e-mail to license@lambdares.com with a context file taken from an existing license

Upgrade Trial

To request a trial license for the purpose of evaluating a possible upgrade (change the OSLO Edition) to the purchased OSLO license, select Upgrade Trial from the Windows Start Menu:



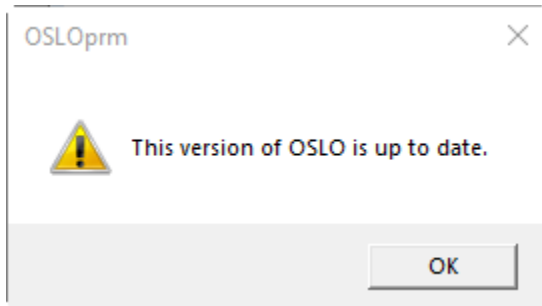
Selecting the Upgrade Trial button initiates an e-mail to sales@lambdares.com with a CodeMeter context file attached.

Please note that the Upgrade Trial license will run concurrently with the existing OSLO license.

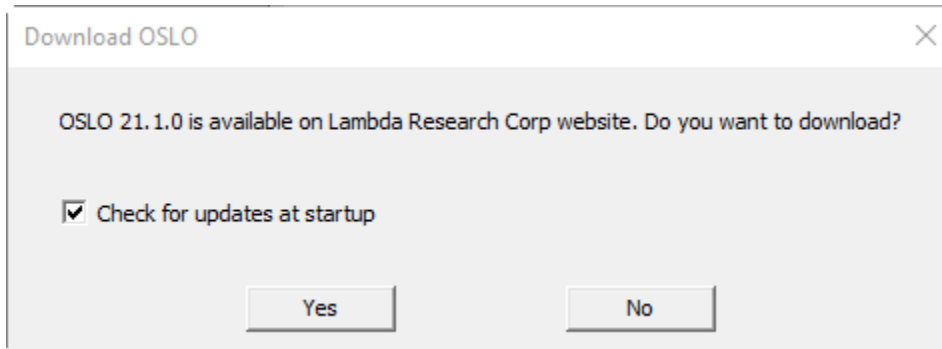
Check for Updates

From the Help Menu, select Check for Updates.

If the latest release is already installed, the following message will be displayed:



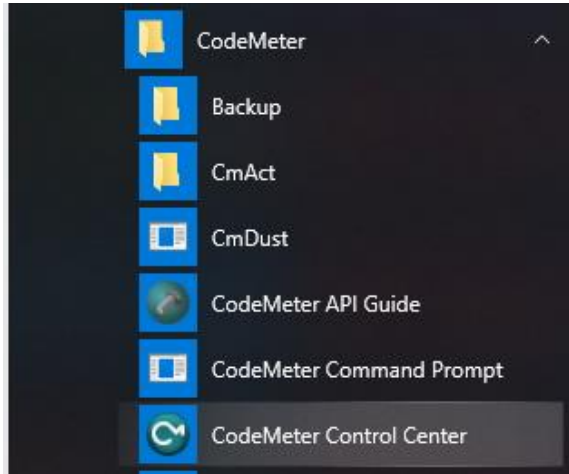
If the latest release has not yet been installed, then this message will appear:



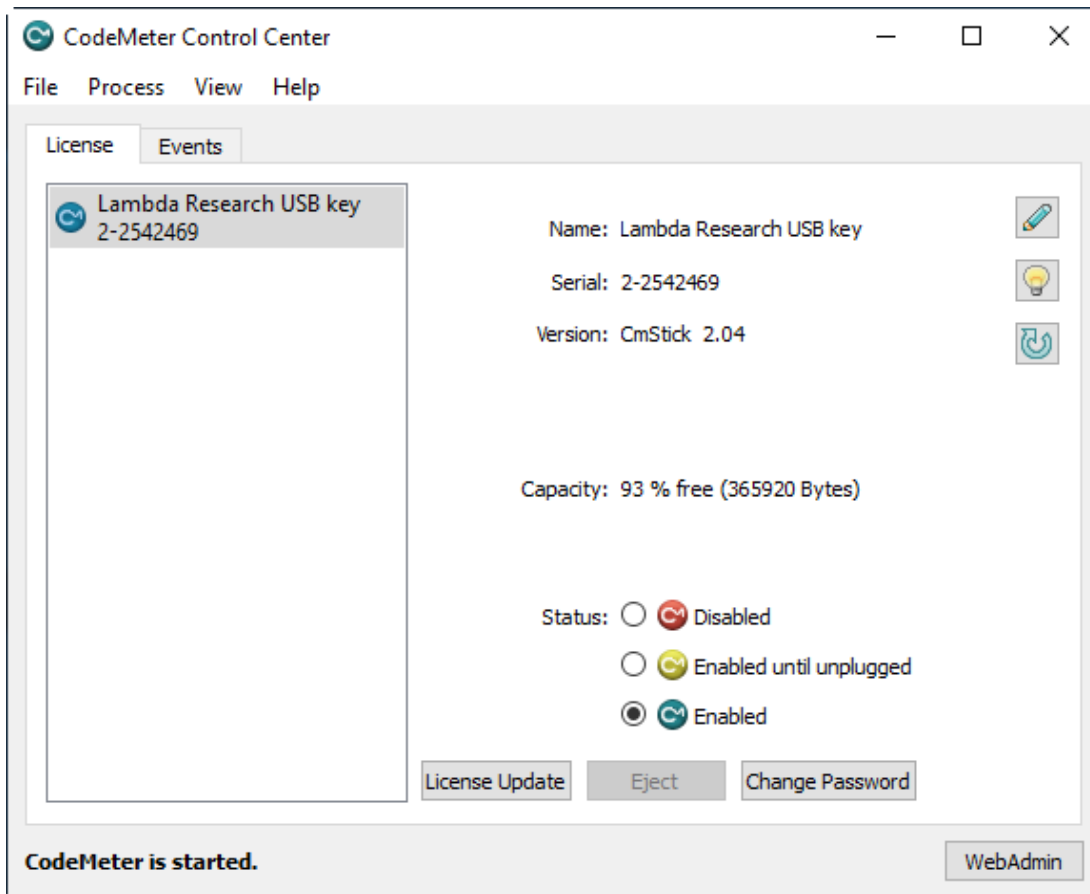
Selecting "Yes" will automatically start the process of downloading the latest installer and installing the software.

Monitoring Network License Usage

The CodeMeter licensing used by OSLO has an interface to obtain the status of a network license. From the Windows Start Menu, select Programs / CodeMeter / CodeMeter Control Center.



This launches the CodeMeter Control Center.



Select the Web Admin button (lower-right).

This will launch CodeMeter WebAdmin in your web browser.

Select the License Monitoring tab.

The screenshot shows the CodeMeter WebAdmin interface. The top navigation bar includes 'Dashboard', 'Container', 'License Monitoring' (selected), 'Diagnosis', 'Configuration', and 'Info'. The main content area is titled 'Available Licenses on 'PASCAL'' and displays a list of licenses. The '101771' category is expanded, showing a table of licenses for Lambda Research Corporation.

Product Code	Name	Feature Map	License Quantity	Used	Available
100	TracePro LC	0xe8000000	10	0	10
110	TracePro Standard	0xe8000000	10	0	10
120	TracePro Expert	0xe8000000	10	0	10
200	Oslo Light	0x0	10	0	10
210	Oslo Standard	0x0	10	0	10
220	Oslo Premium	0x0	10	0	10
300	RayViz for SolidWorks	0x0	10	0	10

Information last updated on 2019-06-07 15:36:31

Current Server: PASCAL (192.168.25.73) WebAdmin Version: 6.70

Please note that the default Current Server is localhost, so the License Monitoring screen will only display licenses hosted on the local computer.

To view licenses from a different server, double-click on “Current Server: localhost” (bottom of window) select another server from the network, then click Apply.

This example is showing a Network License on the server named Pascal, with 10 licenses available for several items of Lambda Research software.

Transferring OSLO to a New Computer

When OSLO is installed on a new computer, there are 3 items that need to be transferred from the old computer, (1) the license, (2) the Private Directory, and (3) the initialization file:

License

The transfer of the license is dependent on the license type

- Single Computer USB License – disconnect the USB device from the old computer and connect it to the new computer
- Single Computer Soft License – since the soft license is bound to the hardware of the computer, the old soft license will need to be removed and a new soft license issued.
 - From the old computer, follow the steps to Upgrade an Existing License per Page 10 (the “upgrade” will be the removal of the license)
 - From the new computer, follow the steps to Request a New License per Page 7.
- Network License (USB or Soft)
 - If the computer with OSLO installed was also the license server, follow the steps in the next section for Transferring the TracePro Network License to a New License Server.

Private Directory

The default location of the OSLO Private directory is:

- C:\Users\Public\Documents\OSLO 64bit Premium\private

To check the location of the Private directory, launch OSLO, select File/Open Lens, then select the Private button. Note the filepath to the Private directory.

Move the OSLO Private directory to the same location on the new computer. A new OSLO Private directory may have been placed in the same location on the new computer by the OSLO Installation, if so, replace this directory with the directory from the old computer.

Initialization File

There is a file that is read by OSLO at each launch that includes preference selections and license information:

- OSLOprm.ini

The location of the file is:

- C:\Users\<USERNAME>\AppData\Roaming\Lambda Research Corporation\Oslo

Move the OSLO .ini file to the same location on the new computer. A new .ini file may have been placed in the same location on the new computer by the OSLO Installation, if so, replace this file with the .ini file from the old computer.

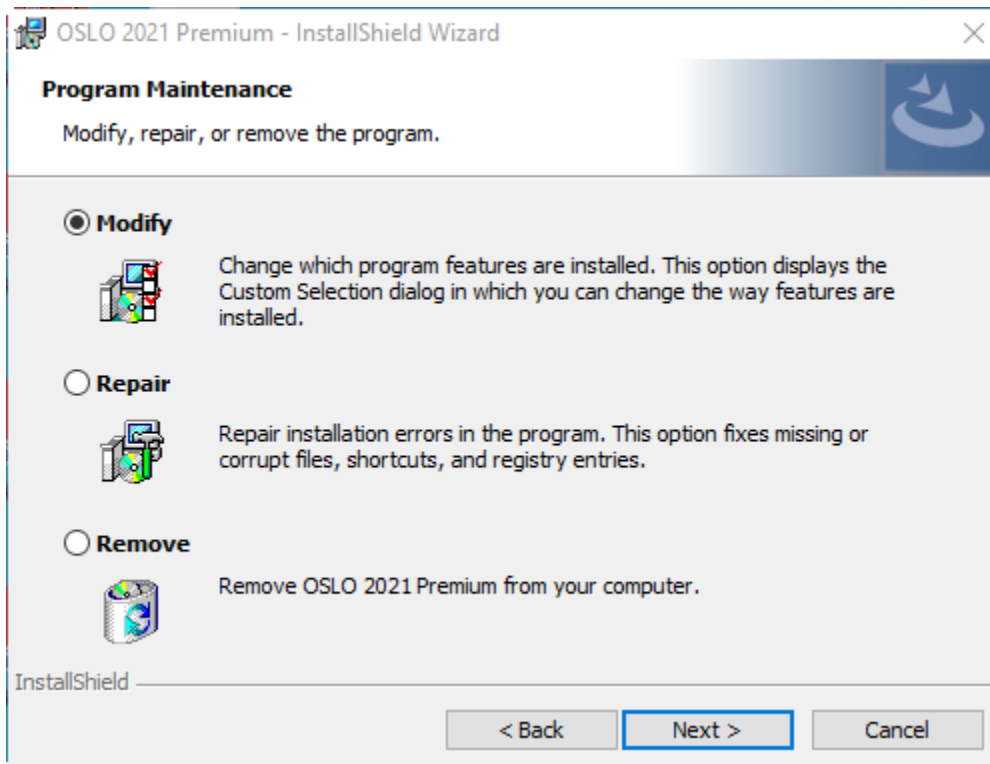
Transferring the OSLO Network License to a New License Server

The transfer of the license is dependent on the license type

- Network USB License
 - Perform the Lambda Network Key Server Installation per Page 4.
 - Disconnect the USB device from the old computer and connect it to the new computer.
- Network Soft License – since the soft license is bound to the hardware of the license server, the old soft license will need to be removed and a new soft license issued.
 - From the old license server, follow the steps to Upgrade an Existing License per Page 10 (the “upgrade” will be the removal of the license)
 - On the new license server, perform the Lambda Network Key Server Installation per Page 4.
 - From the new computer, follow the steps to Request a New License per Page 7.

Modify, Repair, or Remove the Program

- In order to Modify, Repair, or Remove OSLO, initiate the OSLO installation by double-clicking OSLO...Installer.exe.
- Click **Next** to continue.
- If OSLO detects that the same release has already been installed, the following screen will appear:



- Choose **Modify** to open the Select Feature dialog box to choose which installation components to install or uninstall at this time.
- Choose **Repair** to automatically run a Maintenance routine to reinstall any corrupted files from a prior installation.
- Choose **Remove** to uninstall the program.

QUICKSTART GUIDES

Quickstart Guide 1 – Single-computer / Soft License

- Software Download per Page 2
- OSLO Installation per Page 3
- Launching OSLO per Page 5
- Requesting a New License per Page 8
- Activate License per Page 8

Quickstart Guide 2 – Single-computer / USB License

- Software Download per Page 2
- OSLO Installation per Page 3
- Connect the USB key
- Launching OSLO per Page 5

Quickstart Guide 3 – Network / Soft License

Network License Server

- Lambda Network Key Server Installation per Page 4
- Requesting a New License per Page 8
- Activate License per Page 8

Each OSLO User:

- Software Download per Page 2
- OSLO Installation per Page 3
- Launching OSLO per Page 5

Quickstart Guide 4 – Network / USB License

Network License Server

- Lambda Network Key Server Installation per Page 4
- Connect the USB key

Each OSLO User:

- Software Download per Page 2
- OSLO Installation per Page 3
- Launching TracePro per Page 5

TROUBLESHOOTING GUIDE – INSTALLATION AND LICENSING

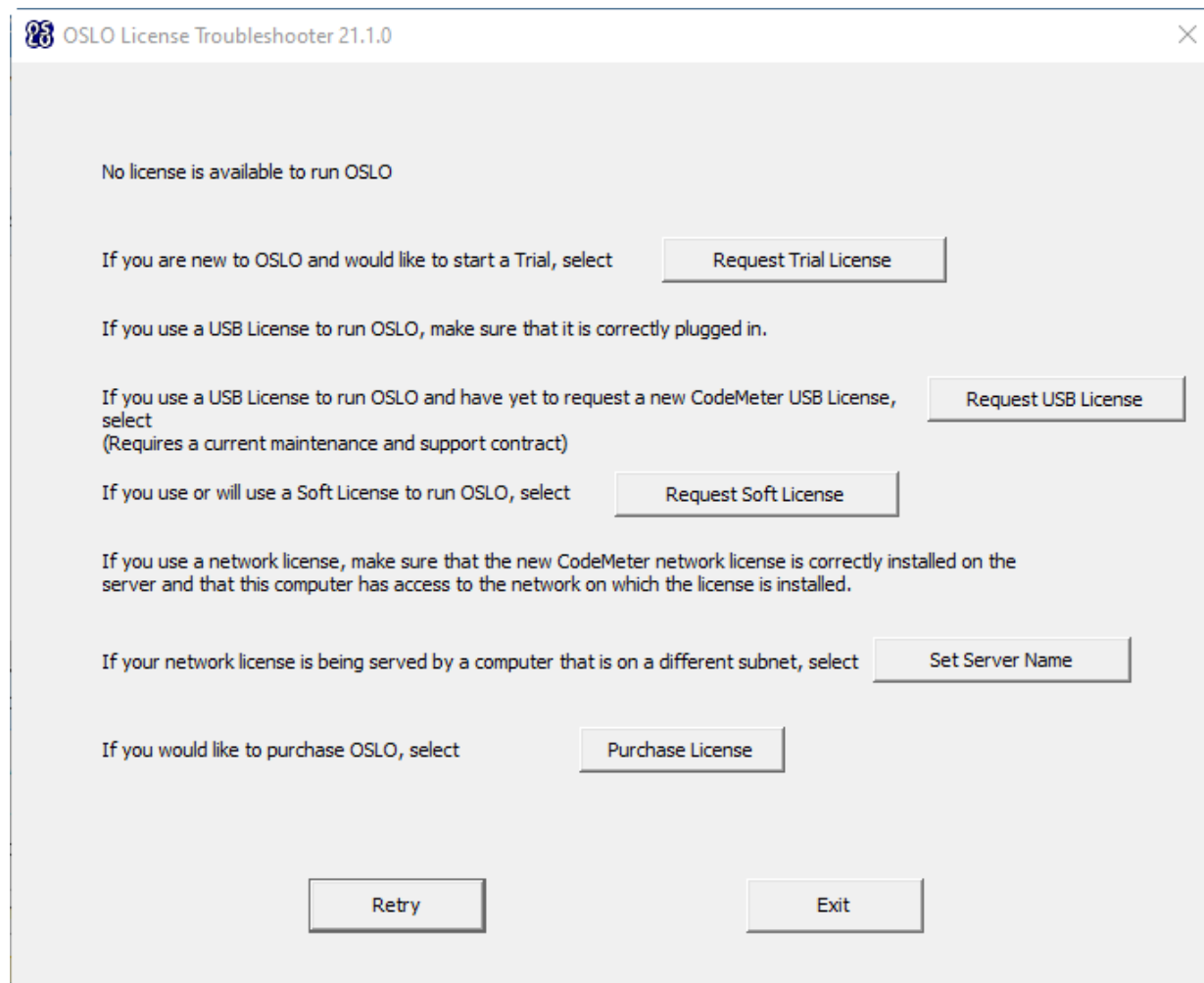
Installation Troubleshooting

TBD

License Troubleshooting

No license is located

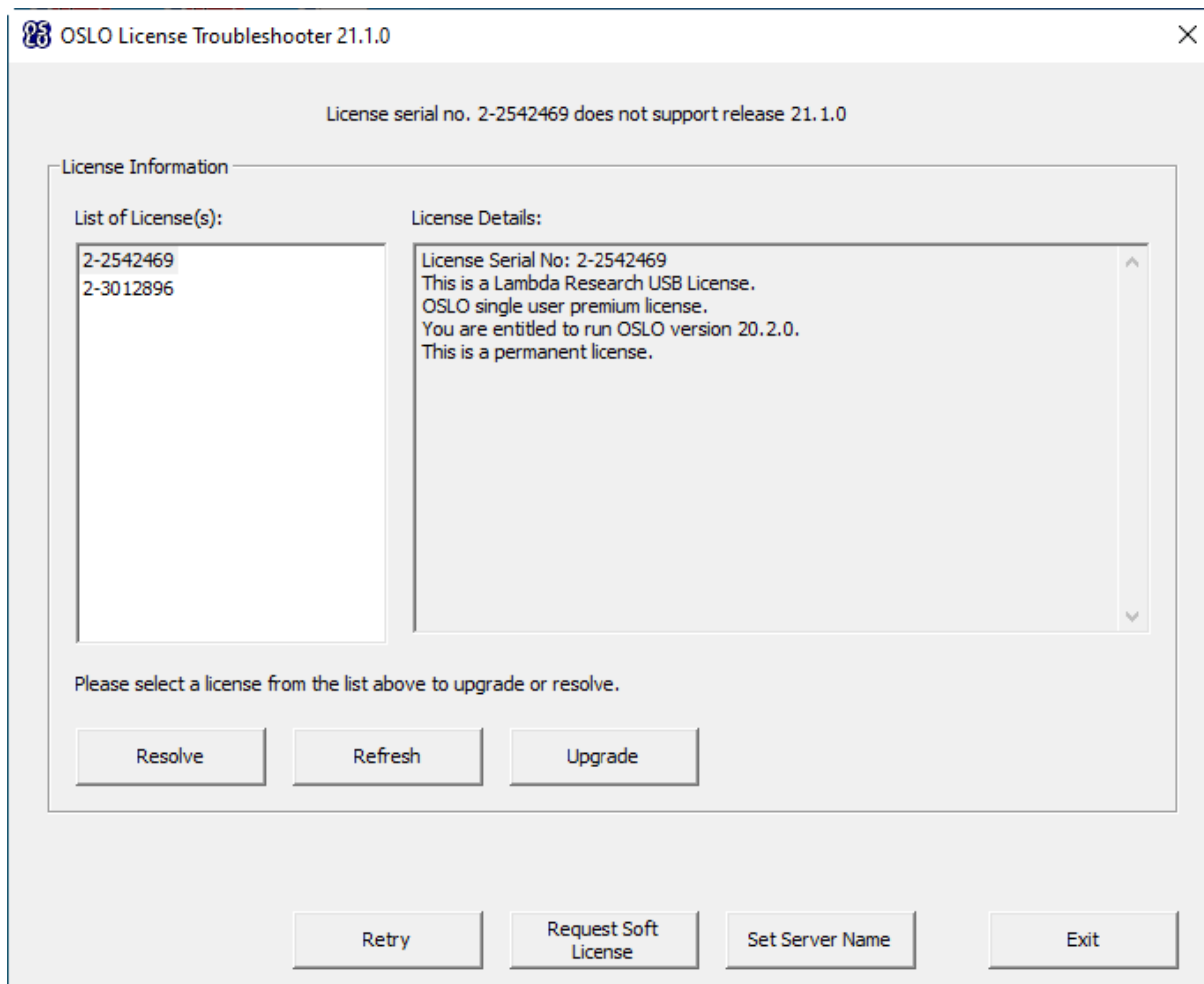
When OSLO is launched (or when the License Troubleshooter is launched on a Network License Server) and no valid license is detected, the OSLO License Troubleshooter dialog will open.



- Request Trial License
 - select this option to send a CodeMeter context file to license@lambdaresearch.com
 - upon receipt of a CodeMeter Update file from license@lambdaresearch.com, save the file, double-click on the file to activate the license, then launch OSLO.
- Request USB key
 - select this option if you have a current Maintenance and Support subscription for OSLO and would like to receive your OSLO CodeMeter USB key to run OSLO 7.
 - upon receipt of the CodeMeter USB key, connect the key, then launch OSLO
- Request Softkey
 - select this option to send a CodeMeter context file to license@lambdaresearch.com
 - upon receipt of a CodeMeter Update file from license@lambdaresearch.com, save the file, double-click on the file to activate the license, then launch OSLO.
- Set Server Name – see separate section below
- Purchase License
 - select this option to send an e-mail to sales@lambdaresearch.com to request information about purchasing a license for OSLO.

A license has been located, but fails

If a license is located, but it fails to launch OSLO, the OSLO License Troubleshooter will open.



Select an item in the List of License Key(s) then select Resolve to start the troubleshooting process.

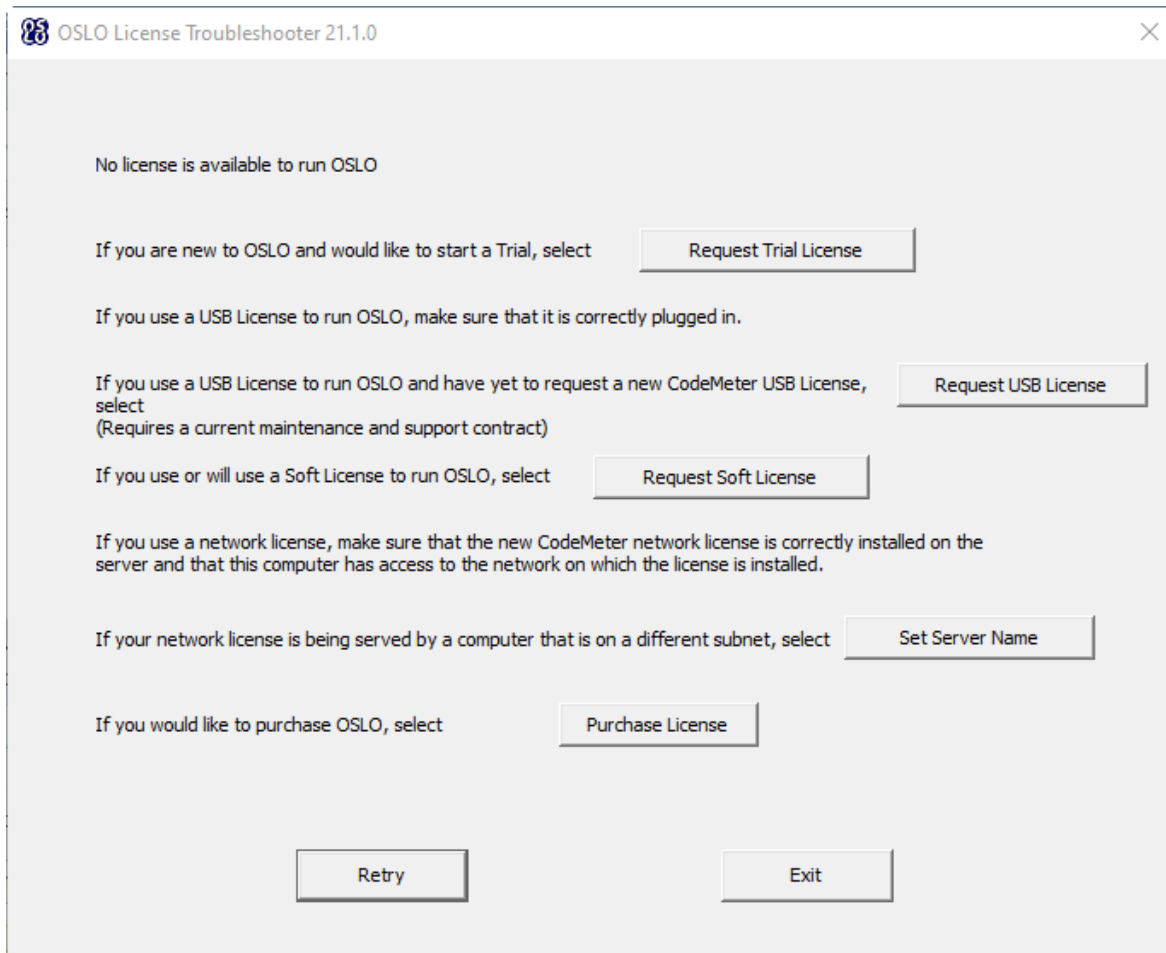
Possible Causes of License Issues

This is a list of some possible causes of license issues:

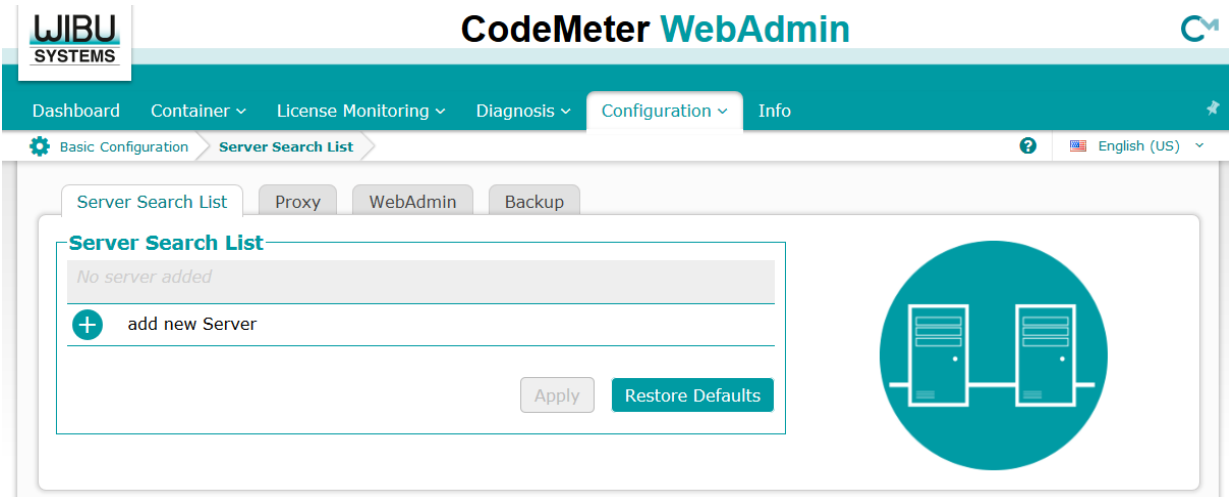
- Codemeter Drivers are failing/not installed
- License does not support the Software Release that was launched
- USB Port Failure
- Key Failure
- Key Programming Error
- Network License(s) are already in use
- No Network Connection to Server
- Network License Server is on a different Subnet than the client
- Unlicensed Edition of OSLO selected
- Conflict with another Codemeter Key
- A temporary license has expired
- Clock Tampering

Set Server Name

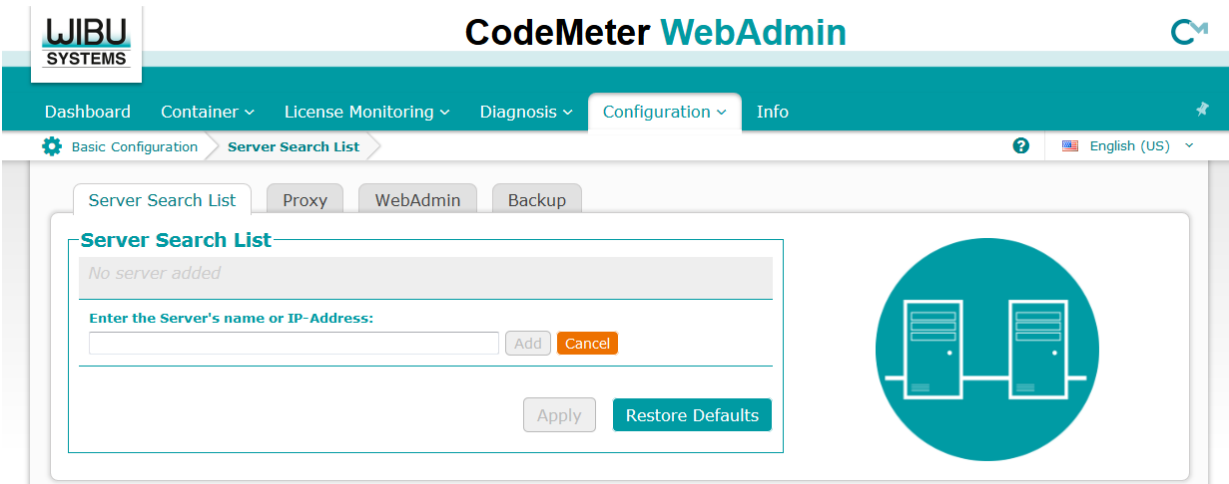
OSLO will automatically detect a network license if the license server and the client are on the same subnet. If the client is not on the same subnet, the OSLO License Troubleshooter will open.



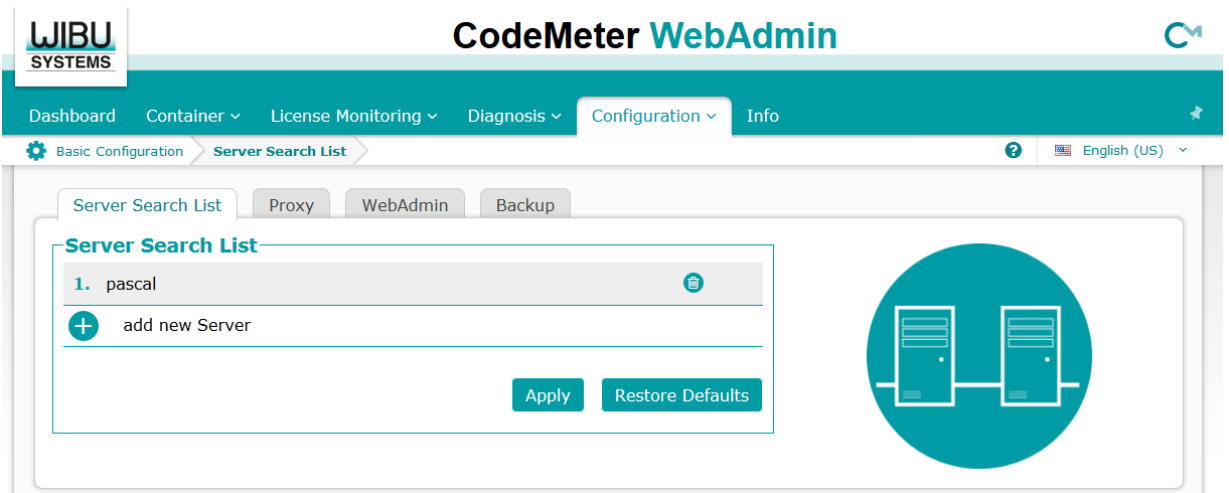
Select Set Server Name, and CodeMeter WebAdmin will open in your web browser:



Select Add New Server



Enter the Server Name or IP Address, then click OK.

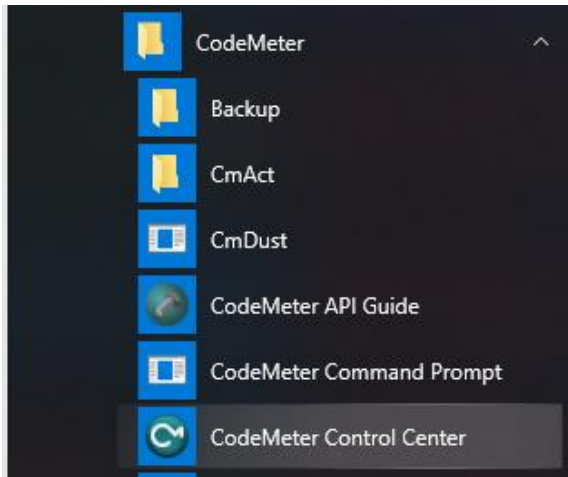


Click Apply. Now, when OSLO is launched, it will search for a license based on this Server Search List.

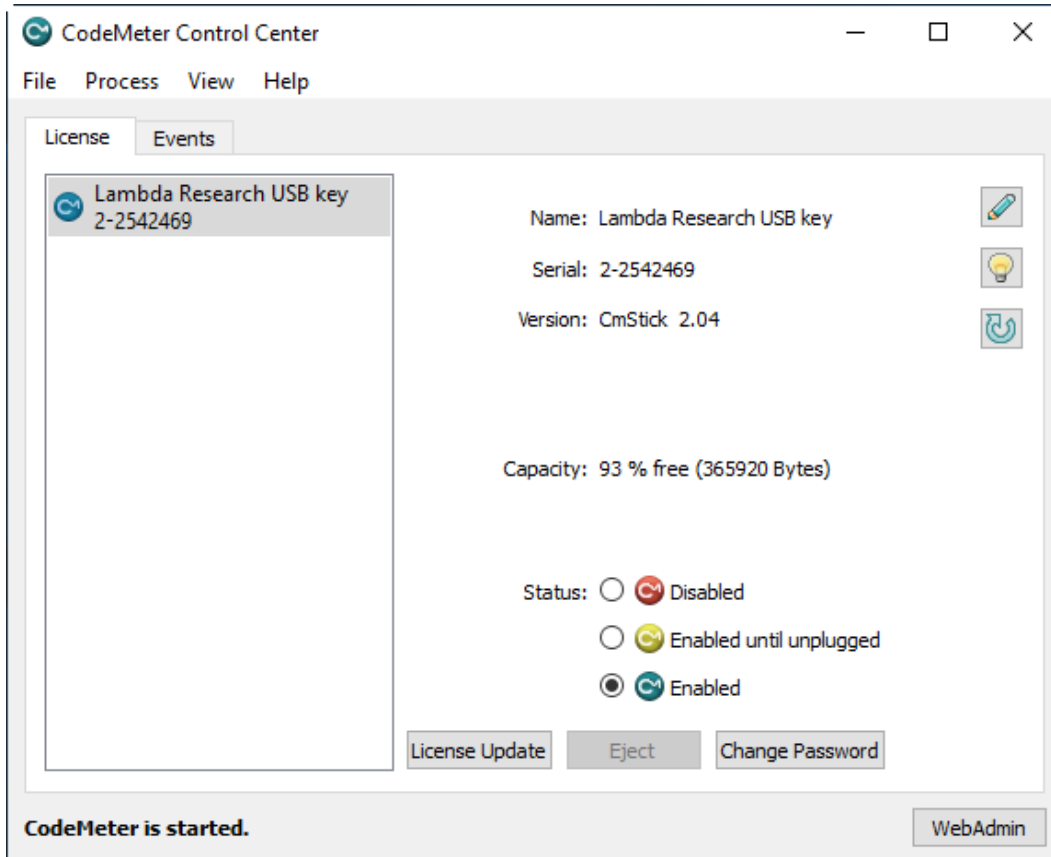
Double-click to Activate license fails

On occasion, the attempt to double-click on the license file to activate or update a license will fail due to a file association error, Windows cannot determine what application should be run to handle the license file.

The license module in OSLO is CodeMeter from Wibu Systems. Codemeter is installed with OSLO, and has a separate User Interface. From the Windows Start Menu, select Programs / CodeMeter / CodeMeter Control Center.



Drag and Drop the license file into the CodeMeter Control Center dialog to activate the license.



APPENDIX A – IMAGE OF CODEMETER USB DONGLE

There are numerous markings on the CodeMeter Dongle. The Serial Number is of the format x-xxxxxxx, and is visible when the side labeled “CodeMeter “ is up.

